

THE CITY STITCH

ENTRANT NO. ULIC1627

You Tube Search: ULIC1627

A CITY MAKING OPPORTUNITY

With Brisbane’s transformation into Australia’s New World City, grand gestures are essential to continue to evolve as a creative and connected subtropical city. Bold and inspiring design that embodies culture and character is essential if we are to move forward as a city on the global stage.

In line with this, the competition brief calls for ideas around connecting the Fortitude Valley with the City Centre creating economic and social benefits. Centenary Place and its surrounds represent a significant opportunity in its own right – an opportunity of global significance. With the benefit of its gateway city cent–re location and proximity to lifestyle and cultural destinations, Centenary Place has a compelling mix of urban ingredients. A place of home, work and play, mixing culture and nature, it has the latent potential to transform into a New World City precinct.

VISION

The City Stitch represents a new model of mixed use precincts - breathing new life into centenary place. It’s unique mix of vibrant living, it’s commercial and creative economy, cultural and community diversity and recreational opportunities brings life and energy to the precinct. As a showcase of landscape urbanism, the City Stitch will be characterised by bustling streets, living towers, elevated gardens, and a rich lifestyle offering. Its compelling layers of new connections and spaces across Centenary Place will create memorable journeys, and for the first time, connect the City Centre with the Fortitude Valley.

Over generations the City Stitch will be renowned for its city significance, redefining Brisbane’s skyline and image to the world. As a stage for public life, the city stitch will be a truly great place to work, live and immerse yourself within with the realms of an urban forest.

GUIDING THEMES

The vision for the City Stitch is built around two guiding themes – each responding to the delivery of the outcomes set out in the competition brief;

- Connected
- Urban
- Active
- Sub-tropical

THEME 1 – A PRECINCT IN ITS OWN RIGHT

The connection between the core of the City Centre and the Fortitude Valley is outside the general parametres of a walkable environment. The strategy to deliver the connection is simple – create a precinct in its own right. The creation of a lifestyle and commercial destination will drive organic growth of the core, bringing the two precincts together. Through a critical mass in use that is complimented by high quality public realm, Centenary Place will transpire as an active, urban precinct. It is the nexus that connects the City Centre with the Fortitude Valley.

THEME 2 – A LAYERED URBAN GARDEN

The essence of a successful urban environment lies in the quality of its public realm. In a truly significant city move, Centenary Place will grow to become a layered landscape. As a flexible platform for connections and social exchange, the verdant gardens will encapsulate slender towers and enliven the public realm. Together, the living built form and landscaped spaces will form an interconnected network of destinations that celebrate the unique and enviable lifestyle of our subtropical city.

THE INTERVENTION

The City Stitch is a re-interpretation of a subtropical forest. Lush, dense and full of life is at the centre of its true being and the essence of place. It will comprise of over 3 hectares of publicly accessible environments as well as a number of semi-public spaces for use by residents and workers within the micro-precincts and individual towers. Creating a quantum of people as its main focus, it will deliver a critical mass of complementary uses set within a globally significant landscape. Through a series of landscape bridges connecting mixed use towers, it will provide an opportunity to connect people, undertake exchange, embrace our subtropical climate and inhabit the city in new and creative ways.

THE FOREST FLOOR (PARK AND BOULEVARDS)

The forest floor is where Brisbane opens its arms and welcomes the world. Defined by it subtropical streets which flank centenary place, the ground plane is predominantly occupied by retail and commercial uses and where the gateway experience is lived. Through a consolidation and re-alignment of the roads, additional parkland is generated and new urban spaces are created.

THE LIANA (GREEN CORRIDORS)

The Liana creates an elevated landscape web – bringing the precinct together and linking the City Centre with the Fortitude Valley. It acts as a contiguous open space for people to embrace

the enviable Brisbane climate and connect with other precincts, towers and its surrounds. Activated by F&B and community spaces at the towers, the Liana is an active green conduit that is the single unifying element of the precinct.

THE EMERGENTS (TOWERS)

The towers are the lifeblood of the precinct. They provide the critical mass in use and return that enables the layers of public realm to occur. The split tower forms are slim and vary in height to open views up, reminiscent of light rays shining through a forest. The towers are vertically split by various complimentary uses that allow people to live, work and play within the realms of the precinct.

THE CANOPY (SKY PARK)

The sky park delivers the ‘Instagram’ moment. It will be an internationally renowned public park with views to the Brisbane River and Mt Coota. Connected by vertical transport to the other public spaces, it provides a personal retreat, elevating its users above the hustle and bustle of the streets.

THE EPIPHYTES (PRECINCT COMMONS)

Although not ‘public’ these elevated spaces still make a major contribution to the overall character of the place and the experience of the City Stitch. The precinct commons deliver a balcony for each mirco-precinct to interact with other towers by encouraging vibrant connections between residents, workers and visitors.

THE NESTS (ROOFTOP TERRACES)

The Nests are truly iconic spaces. Set in the sky at the top of each tower, they provide private spaces for each tower. They are flexible spaces to meet, gather and entertain and take in some of Brisbane’s best views.

THE OUTCOME

Through leveraging private investment for social benefits, The City Stitch will deliver a major city attraction – worthy of global significance. It will welcome the world into the realms of our city and allow people from all walks of life to inhabit their city in news ways. It will be a place that supports the growth and development of people and drive significant tourism and investment opportunities for the people of Brisbane.

THIS IS THE CITY STITCH.



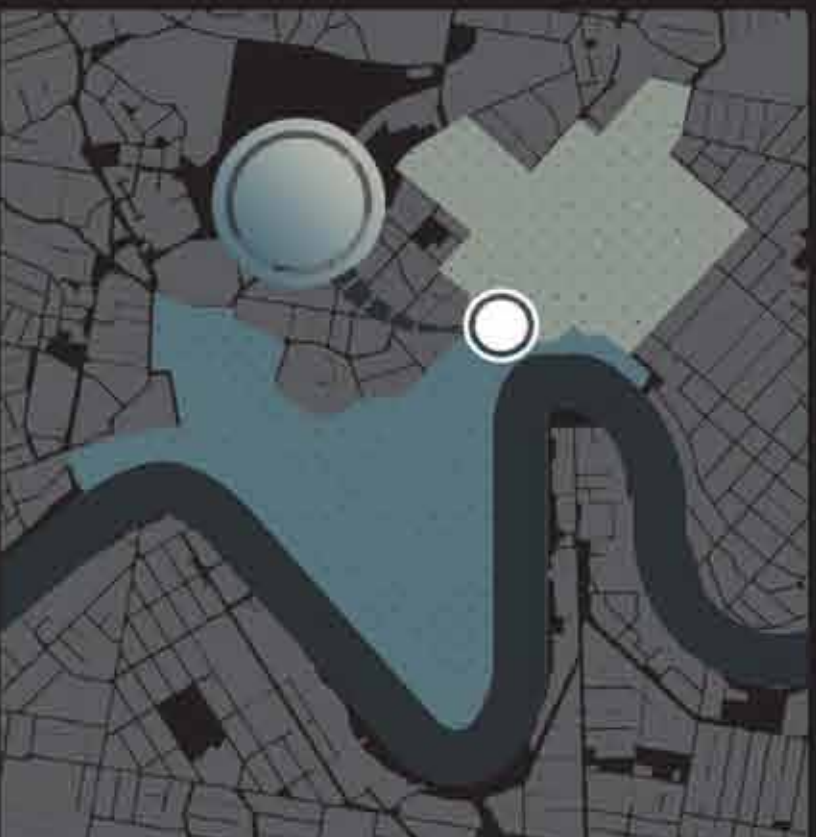
AN EXPANDING CITY CENTRE



A CITY GATEWAY



A BLENDED PRECINCT



A PRECINCT IN ITS OWN RIGHT

The connection between the core of the City Centre and the Fortitude Valley is outside the general parameters of a walkable environment. The strategy to deliver the connection is simple – create a precinct in its own right. The creation of a lifestyle and commercial destination will drive organic growth of the core, bringing the two precincts together. Through a critical mass in use that is complimented by high quality public realm, Centenary Place will transpire as an active, urban precinct. It is the nexus that connects the City Centre with the Fortitude Valley.

A LAYERED URBAN GARDEN

The essence of a successful urban environment lies in the quality of its public realm. In a truly significant city move, Centenary Place will grow to become a layered landscape. As a flexible platform for connections and social exchange, the verdant gardens will encapsulate slender towers and enliven the public realm. Together, the living built form and landscaped spaces will form an interconnected network of destinations that celebrate the unique and enviable lifestyle of our subtropical city.



THE CITY STITCH

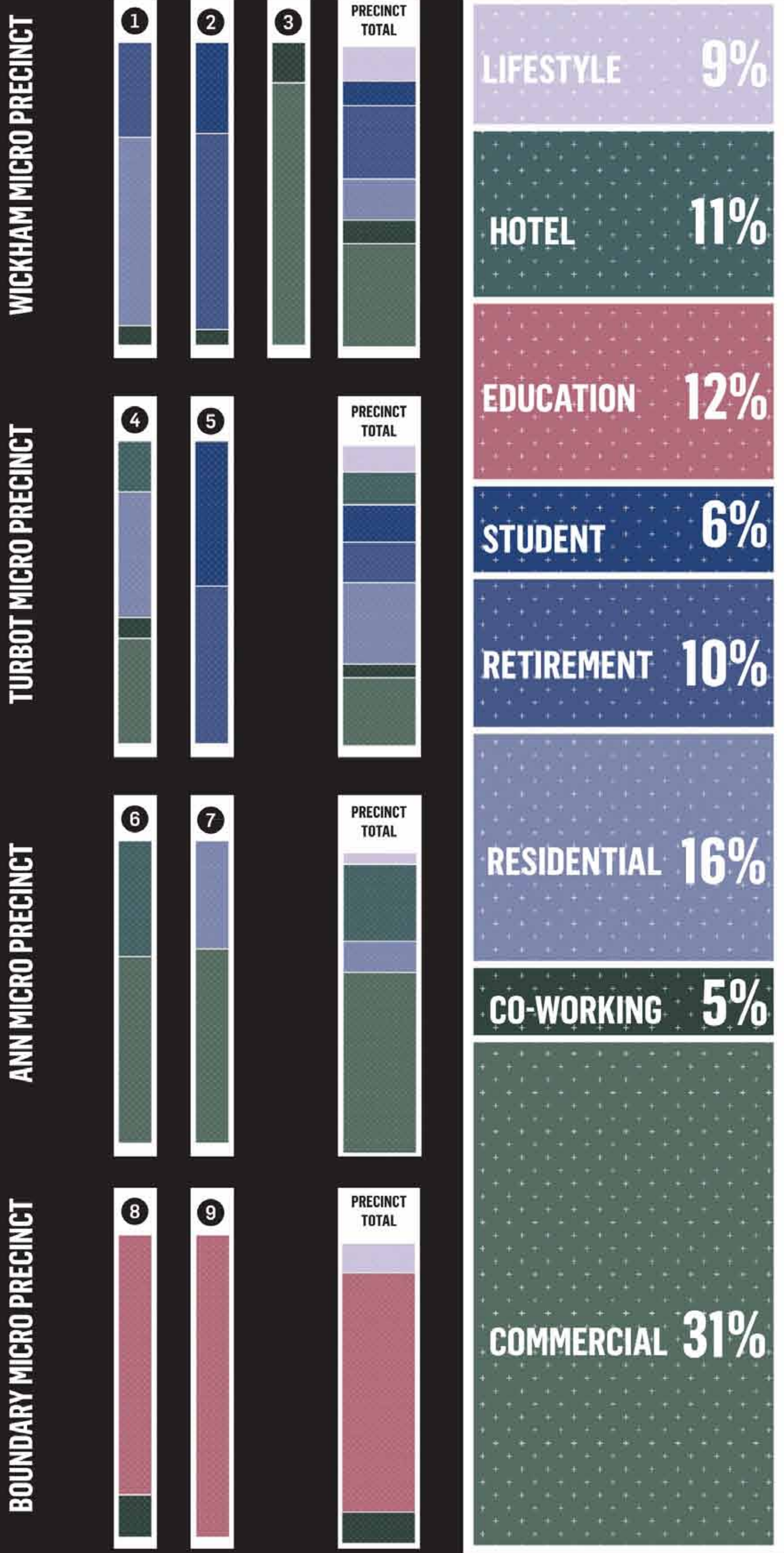


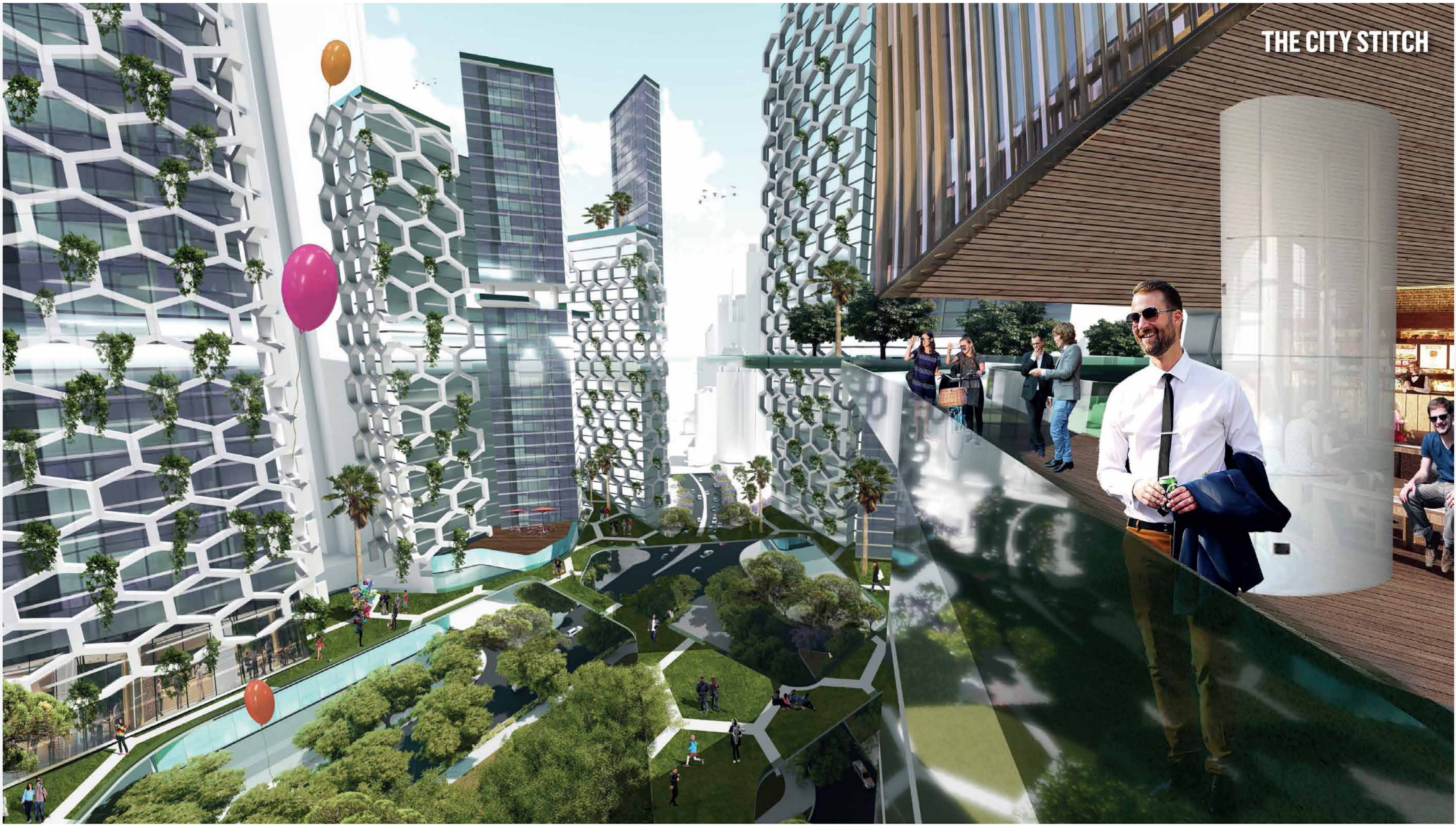
MICRO - PRECINCT	
1	WICKHAM
2	TURBOT
3	ANN
4	BOUNDARY



THE CITY STITCH

GFA METRICS TO A PLACE FOR ALL





**OVER 3000
RESIDENTS**



**200% MORE
OPEN SPACE**



**330,000m²
TOTAL GFA**



**JOB CREATION &
TOURISM SPEND**



THE FOREST FLOOR

The forest floor is where Brisbane opens its arms and welcomes the world. Defined by its subtropical streets which flank centenary place, the ground plane is predominantly occupied by retail and commercial uses and where the gateway experience is lived. Through a consolidation and re-alignment of the roads, additional parkland is generated and new urban spaces are created.



THE LIANA

The Liana creates an elevated landscape web – bringing the precinct together and linking the City Centre with the Fortitude Valley. It acts as a contiguous open space for people to embrace the enviable Brisbane climate and connect with other precincts, towers and its surrounds. Activated by F&B and community spaces at the towers, the Liana is an active green conduit that is the single unifying element of the precinct.



THE CANOPY

The sky park delivers the 'Instagram' moment. It will be an internationally renowned public park with views to the Brisbane River and Mt Coota. Connected by vertical transport to the other public spaces, it provides a personal retreat, elevating its users above the hustle and bustle of the streets.



THE EMERGENTS

The towers are the lifeblood of the precinct. They provide the critical mass in use and return that enables the layers of public realm to occur. The split tower forms are slim and vary in height to open views up, reminiscent of light rays shining through a forest. The towers are vertically split by various complimentary uses that allow people to live, work and play within the realms of the precinct.



THE EPIPHYTES

Although not 'public' these elevated spaces still make a major contribution to the overall character of the place and the experience of the City Stitch. The precinct commons deliver a balcony for each micro-precinct to interact with other towers by encouraging vibrant connections between residents, workers and visitors.



THE NESTS

The Nests are truly iconic spaces. Set in the sky at the top of each tower, they provide private spaces for each tower. They are flexible spaces to meet, gather and entertain and take in some of Brisbane's best views.

A CITY MAKING OPPORTUNITY

AN EXPANDING CITY CENTRE



INNOVATION DIRECTION

Deliver a precinct that supports the organic growth of the city centre

A CITY GATEWAY



INNOVATION DIRECTION

Create an enriched urban environment that defines Brisbane's character and celebrates arrival in the city centre

A BLENDED PRECINCT

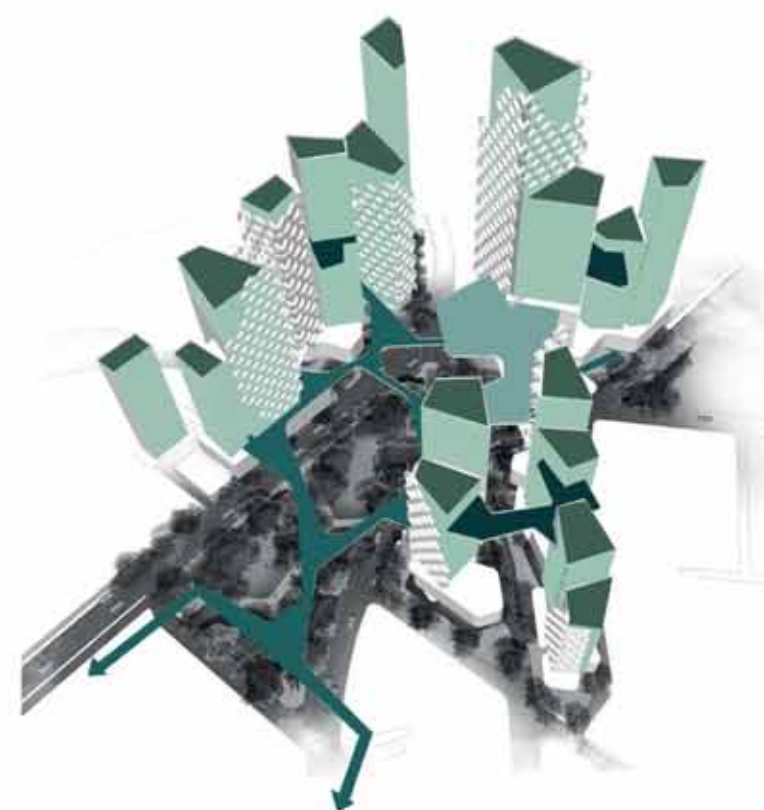


INNOVATION DIRECTION

Create a truly integrated mixed use precinct that evolves into a place for people from all walks of life

1

AN URBAN FOREST WITH LAYERS OF PUBLIC LIFE



- THE NESTS (ROOFTOP TERRACES)
- THE EPIPHYTES (PRECINCT COMMONS)
- THE CANOPY (SKY PARK)
- THE EMERGENTS (MIXED USE TOWERS)
- THE LIANA (LANDSCAPE BRIDGE)
- THE FOREST FLOOR (PARK AND BOULEVARDS)



2

GUIDING THEMES

A PRECINCT IN ITS OWN RIGHT

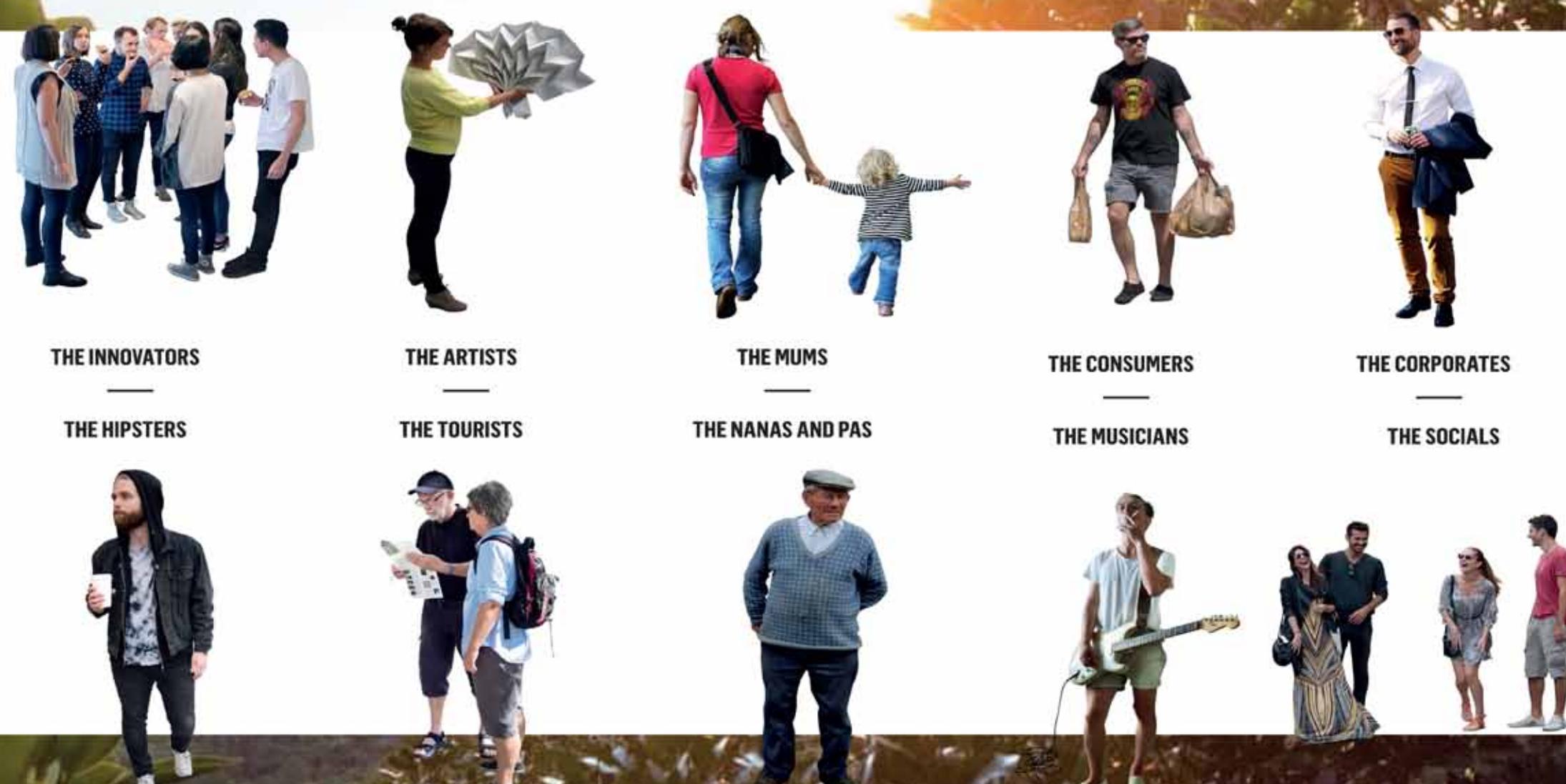


A LAYERED URBAN GARDEN



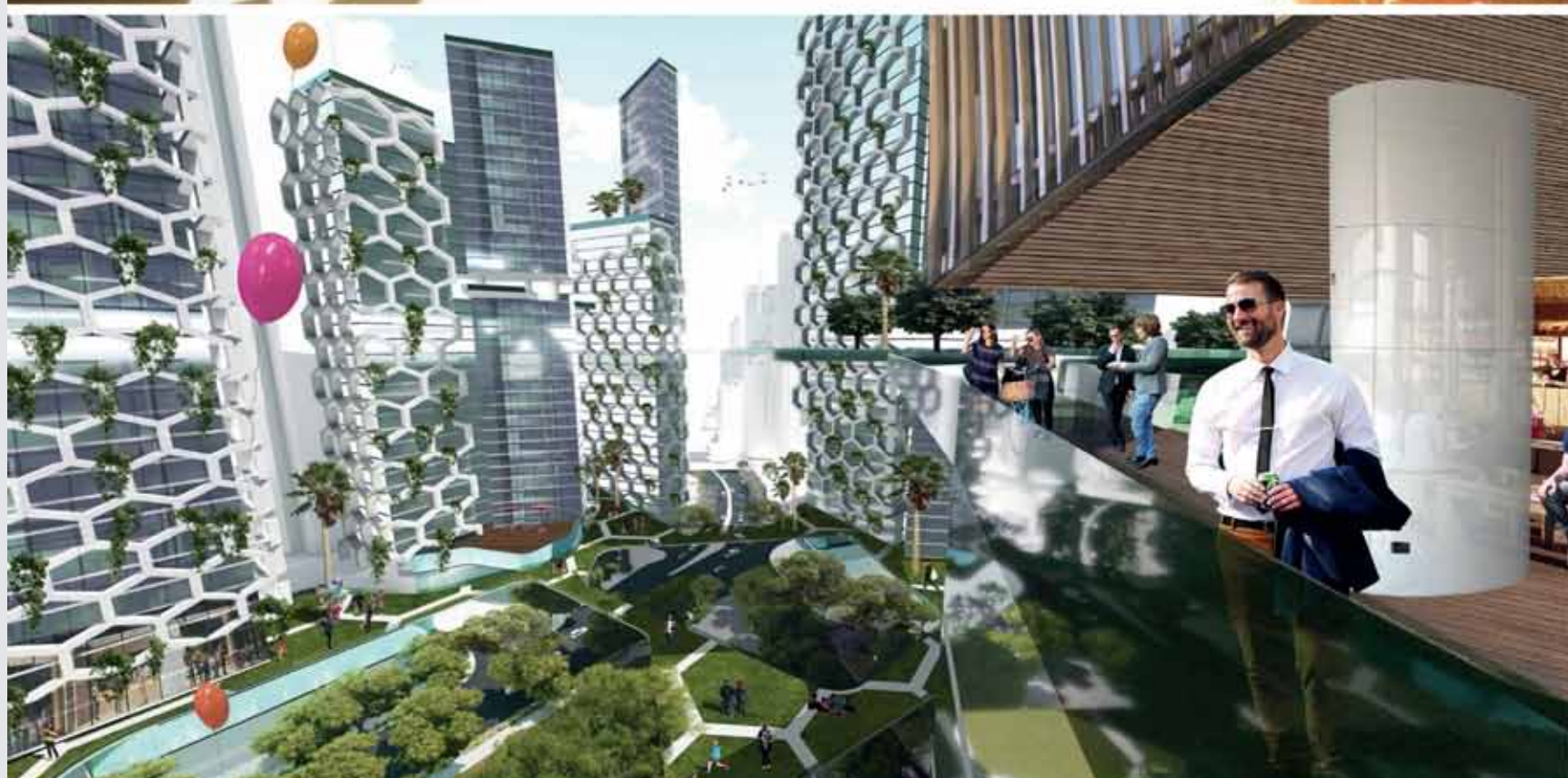
3

A PLACE FOR ALL



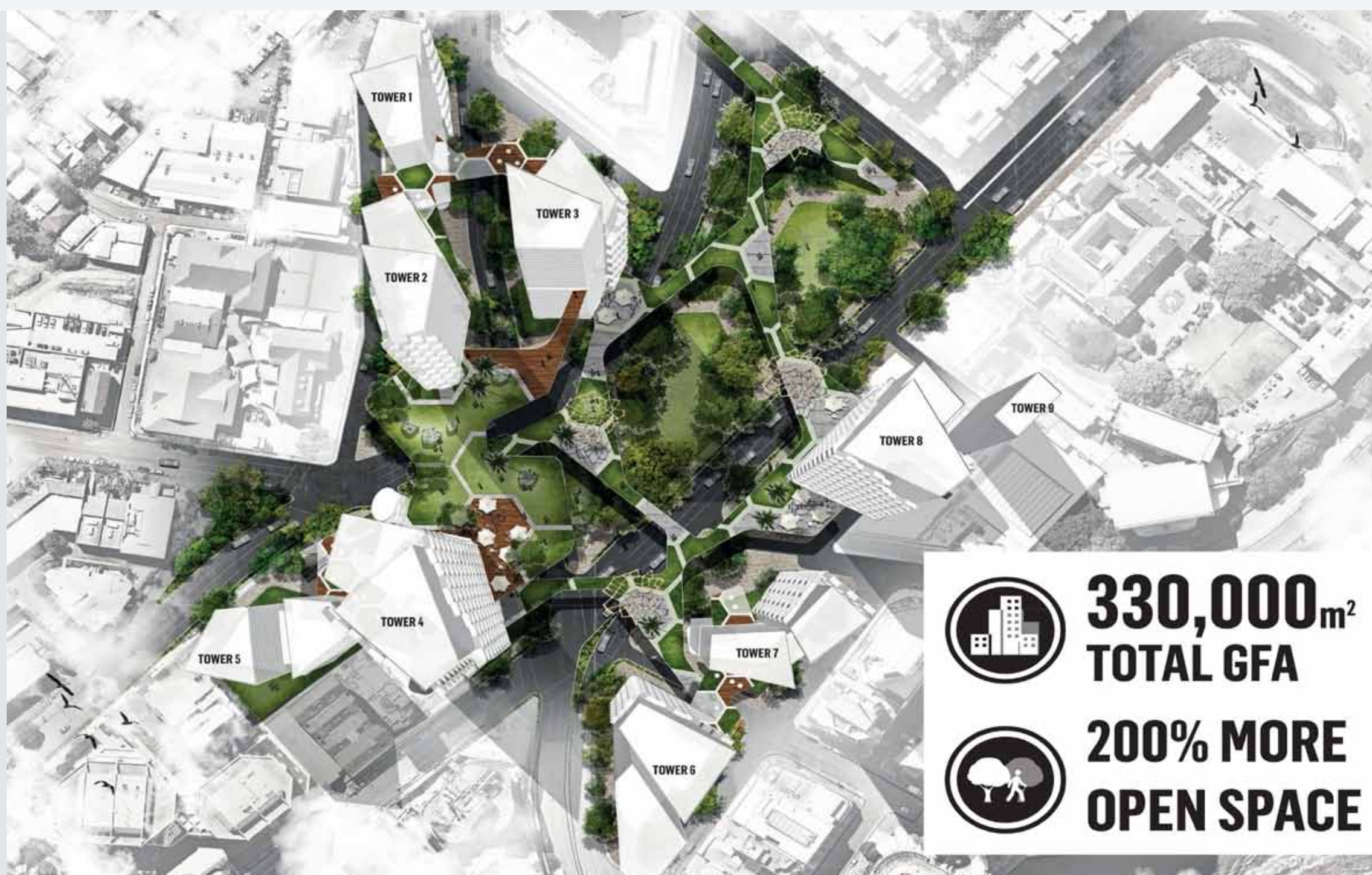
4

DISCOVER A NEW MODEL IN MIXED USE DEVELOPMENT



- LIVE
- WORK
- LEARN
- VISIT

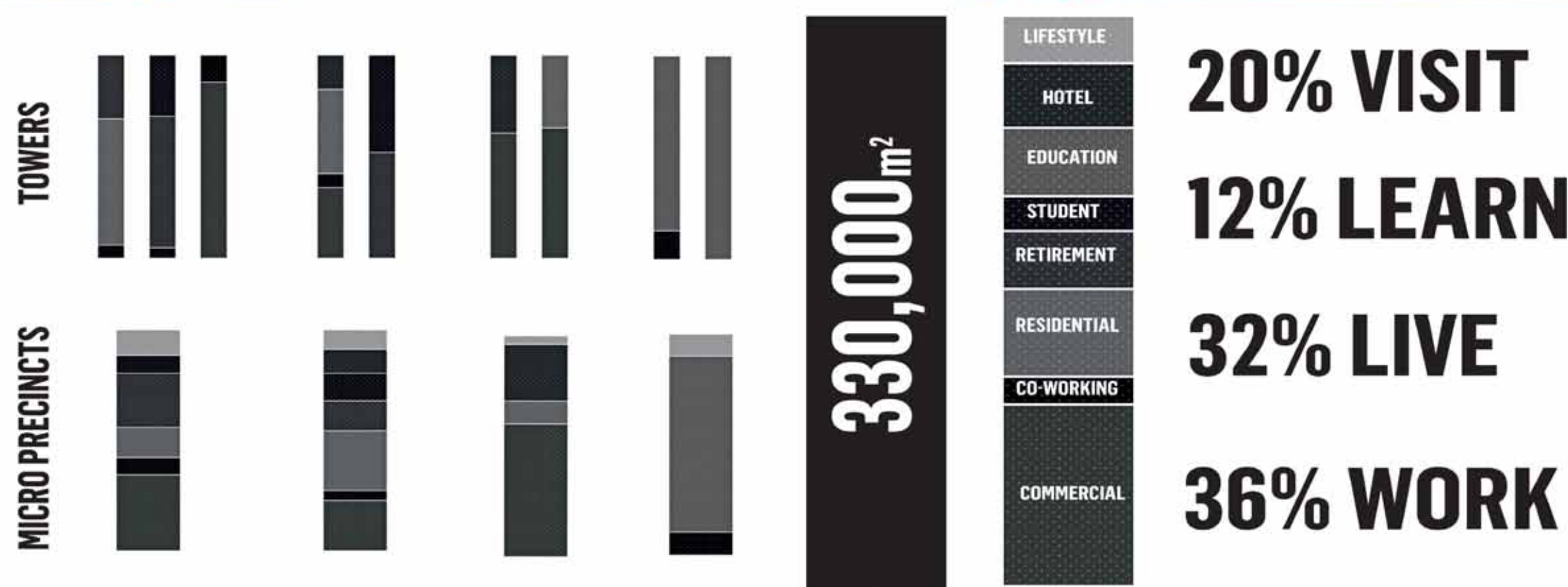
5



6

330,000m² TOTAL GFA
200% MORE OPEN SPACE

GFA METRICS TO SUPPORT THE DEMOGRAPHIC DIVERSITY



7



8



9



10