



2023 ULI Asia Pacific Los Angeles Study Tour

In conjunction with the **ULI Fall Meeting**

27 October - 2 November



[Visit website](#)



A PLACE FOR BOLD DREAMS, CREATIVE EXPRESSION AND LIMITLESS POSSIBILITIES

Los Angeles, the second-most populous city in the United States after New York City, is vibrant and sprawling. One of the most culturally diverse destinations in the world with Angelenos from 140 countries who speak 224 different languages, L.A. inspires visitors to submerge themselves in unique perspectives, unexpected moments and an open-hearted community.

The City of Angels enjoys an abundance of multi-faceted neighbourhoods and hidden gems to explore. From world-class museums and championship sports teams to beautiful beaches and one-of-a-kind culinary experiences, Los Angeles continues to be a city that attracts people from all over the world seeking opportunities, adventure, and a taste of the famous Californian lifestyle.

LOS ANGELES STUDY TOUR

Visit landmark projects across the city

Preceding the ULI Fall Meeting, this Study Tour will provide unique insights into some of the city's most remarkable urban developments. Join private, guided insider tours led by the senior leaders and experts who spearheaded these projects. Seize this exclusive opportunity to engage with the wider ULI membership through an immersive, hands-on, experiential learning journey to the cultural, entertainment, and economic hub of the West Coast.

Experience the fun side of the City of Angels

All work and no play? No way!

Known as a melting pot of cultures, Los Angeles is renowned for its diversity, innovation, and abundance of high-quality entertainment and gastronomy. As part of your tour package, experience the excitement of watching a live game at the Crypto.com Arena.

You will also have a chance to explore Los Angeles on your own on Sunday.

INDICATIVE ITINERARY

27 October – 2 November 2023

| DAY ONE | | |
|-------------------------------------|--------------------------------------------------------------------------------------------------|----------------------------------------------------------------------------------|
| Date | Activity | Description |
| 27 October Friday | Breakfast and briefing | Overview of mixed-use and active adult sectors in L.A. |
| | Project tours (lunch included) | Access to significant projects in West LA |
| | Networking cocktails and dinner | Socialise with fellow tour participants and local members over drinks and dinner |
| DAY TWO | | |
| 28 October Saturday | Project tours (lunch and dinner included) | Access to significant projects in North/East LA |
| DAY THREE | | |
| 29 October Sunday | Project tour | Access to senior housing project in Downtown L.A. |
| | Free and easy | Explore Los Angeles on your own |
| | Game night (dinner included) | Catch a game LIVE at Crypto.com Arena |
| DAYS FOUR TO SEVEN | | |
| 30 Oct - 2 Nov Monday - Thursday | ULI Fall Meeting (Curated real estate tours, forums, general sessions and networking receptions) | View programme |

ULI reserves the right to amend the tour programme (including duration and itinerary) as deemed necessary without prior notice.



PROJECT SITES

The following represents some of the itinerary covered as part of the study tour, which will centre on **mixed-use, senior housing, office and student housing projects**. Additional project sites will progressively be updated on the [website](#). Please check regularly for updates.

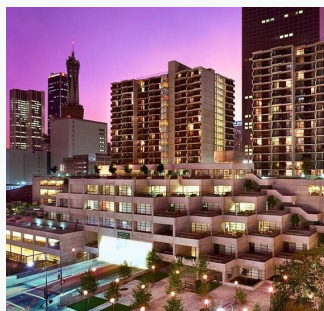


Image credit:
[Retirement Housing Foundation \(RHF\)](#).

ANGELUS PLAZA

Angelus Plaza is one of America's largest affordable housing communities for older adults offering 1,093 one-bedroom apartments in five high-rise towers in the heart of downtown Los Angeles. Based on its size and downtown location, RHF included an adjacent senior center when it built Angelus Plaza in 1980. Angelus Plaza serves one of the most ethnically diverse, low-income, and densely populated areas in Los Angeles. Through its extensive collaborative efforts, the 75,000 square-foot, six-story Center provides seniors access to health services, meals and nutrition programs, recreation, social engagement, and lifelong learning opportunities.

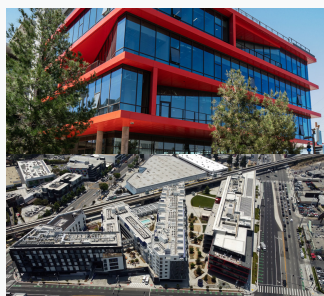


Image credit: [LOWE](#)

IVY STATION

Ivy Station is a mixed-use transit-oriented development that provides a mix of retail, office, hotel and residential uses surrounding a large central open space conveniently served by light rail and bus transit. The property location, primarily in Culver City but crossing the boundary into the City of Los Angeles - and adjacent to a Metro station - added complexity to the entitlement process with approval required from both jurisdictions and from Los Angeles County Metropolitan Transportation Authority. Ivy Station is a LEED-ND certified property and has earned numerous awards for concept, design and construction.



Image credit: [McCarthy Cook & Co.](#)

LUMEN

Located in the Sawtelle District on Olympic Boulevard in West Los Angeles, Lumen is an exciting 550,000 square-foot mixed-use project that reimagined the two 350,000 square-foot 1980's Trident Center office buildings into a cohesive campus that incorporates 65,000 square feet of beautiful above grade landscaped outdoor amenity space. It incorporates the latest health and wellness and energy efficient technologies, including the only triple paned floor-to-ceiling glass curtain wall in California and a state of the art 4 pipe HVAC system.

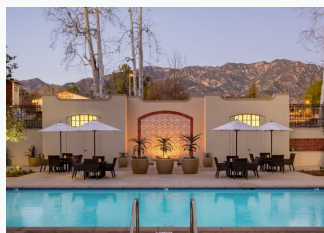


Image credit:
[Episcopal Communities & Services](#)

MONTECEDRO

MonteCedro is a nonprofit Life Plan community created specifically for active seniors aged 62+. Its eight-acre, resort-style community is surrounded by the beauty of the San Gabriel Mountains. The development offers a luxury lifestyle supported by exceptional services and amenities, a holistic, proactive approach to health and wellness, customisable accommodations, and an active, vibrant social life.



Image credit: [Greystar](#)

THE RISE KOREATOWN

The Rise Koreatown is a fresh new collection of contemporary residences, beautifully designed to harmonise with the outdoors. Inside, the residences are styled interiors with modern looks and the latest finishes and smart home features. The second phase will introduce the extensive ground-floor retail space component, aimed at bringing both everyday conveniences and enticing social experiences to The Rise's residents and neighbouring communities.



Image credit: [Greystar](#)

THE 505

The 505 Apartments is a class A, purpose-built Student Living community serving the University of Southern California. This development delivers a wide variety of amenities with luxury living interiors, including a spa, courtyard, outdoor terrace, fitness centre with an added yoga studio attachment, a recreational centre, and study lounge with a business centre and podcast studios.



Image credit: [Shea Homes](#)

TRILOGY AT THE POLO CLUB

The Polo Club is the centrepiece of the exclusive gated Trilogy® community located along the acclaimed Avenue 52 on the border of La Quinta and Indio. The 25,000+ square foot masterpiece offers dining, events space, fitness, pools, and outdoor recreation. This Club is a fully private entity and operates with the service of a private country club, with hospitality professionals in place to ensure that members receive the highest level of service.



Image credit: [Silverstein Properties](#)

US BANK TOWER

Soaring 1,018 feet high, US Bank Tower is considered the defining anchor of the Downtown Los Angeles skyline. The 72-story building offers tenants a level of quality, luxury and prestige that has few rivals in the United States. The amenity rich location and unparalleled transportation options attract well-capitalized financial institutions, insurance companies, law firms and technology companies. The 1.4 million square foot Class A tower boasts full height windows with unrivaled floor-to-ceiling heights ranging from 13 to 18 feet. The Vista on level 54 is a hospitality-inspired destination exclusive to building tenants, featuring curated food and beverage options, event and conferencing spaces, flexible workspaces, and meeting and pitch rooms.



Image credit: [Hines](#)

WEST EDGE

West Edge is one of the newest and largest transformative, transit-oriented live, work, and play communities in Los Angeles. The development consists of 600 multifamily units, grocery and neighbourhood-serving retail, 200,000 sf of office space and ½ acre of open space. It was designed to meet the highest standards for efficiency, connectivity and wellness. The creative offices have earned Platinum level WIRED certification from WiredScore for best-in-class internet infrastructure. West Edge is also registered with the goals of LEED Gold Certification and WELL Gold Certification upon completion.



FALL MEETING

CONNECT WITH THE WORLD OF REAL ESTATE

30 OCTOBER, MONDAY

Take your pick from curated private tours* of renowned L.A. developments, and then end your day with the ULI Fall Meeting Opening Reception, where you will have the opportunity to meet with ULI members from around the world.

31 OCTOBER, TUESDAY – 2 NOVEMBER, THURSDAY

Spend an engaging three days at ULI Fall Meeting at the Los Angeles Convention Centre.



6,100+

Real estate professionals



45+

Concurrent sessions



150+

Speakers

You will have the chance to engage with influential decision-makers and industry experts while gaining invaluable insights through thought-provoking sessions, interactive workshops, and collaborative forums. Together, we will explore innovative solutions to the pressing issues affecting our cities and communities.

*Spaces are assigned on a first-come, first-served basis. ULI reserves the right to offer another tour in the event a tour is sold out.

SNAPSHOTS OF THE 2022 ULI FALL MEETING IN DALLAS



ACCOMMODATION

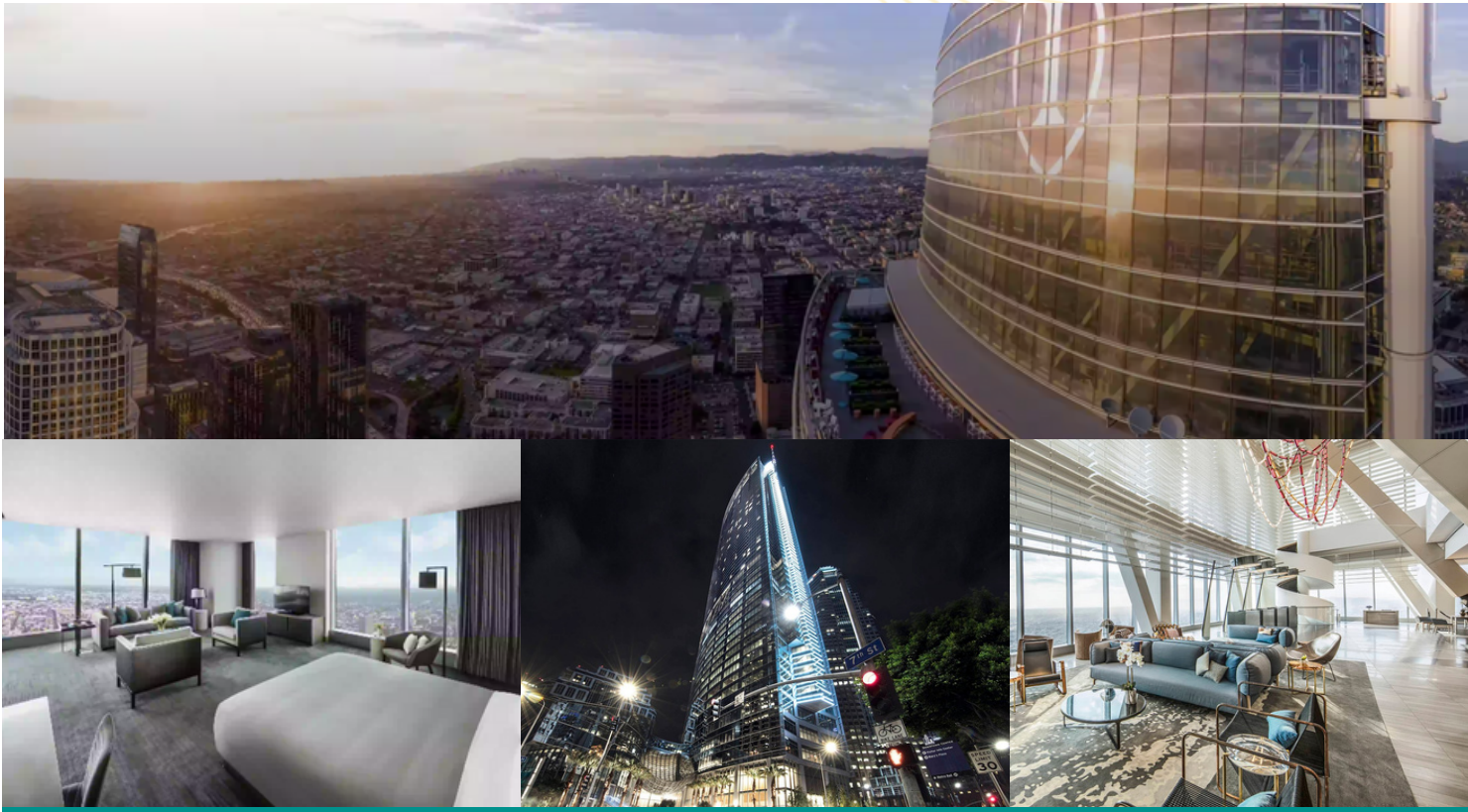


Image credit: [InterContinental Los Angeles Downtown](#)

InterContinental Los Angeles Downtown

Elevate your expectations with 360-degree breathtaking views of the legendary California sunset from the tallest building on the West Coast. Check in on the 70th floor sky lobby and enjoy world-class dining atop miles of glass and steel shaped 73 stories high, rising 1,100 feet above street level. This structure not only redefines the L.A. skyline but also reflects the glamour and exhilaration that define what it means to live the InterContinental life, with its rich, storied history and promise of good things to come. InterContinental Los Angeles Downtown awaits.

Bask in breathtaking city views and enjoy an unrivalled stay in downtown Los Angeles with all the modern comforts of a luxury hotel room at your fingertips. Members will be booked into Junior Suites featuring floor-to-ceiling windows, as well as complimentary Wi-Fi, a spa-inspired bathroom, and a convenient mini bar (at own cost). Breakfast is included in your package.

KEY INFORMATION

PROGRAMME COSTS

Option 1: Tour plus Fall Meeting ticket USD10,800

What is included:

- Accommodation (single occupancy) in a Junior Suite at the InterContinental Los Angeles Downtown for 8 nights
- Group meals on study tour days, 27-29 October (per itinerary)
- Air-conditioned ground transportation for transfers to project tours
- Entrance tickets to any recreational activity and guided tours arranged as part of the package
- ULI staff support
- 2023 ULI Fall Meeting ticket

Option 2: Tour without Fall Meeting ticket USD8,600

(applicable only to members already registered for 2023 ULI Fall Meeting)

What is included:

- Accommodation (single occupancy) in a Junior Suite at the InterContinental Los Angeles Downtown for 8 nights
- Group meals on study tour days, 27-29 October (per itinerary)
- Air-conditioned ground transportation for transfers to project tours
- Entrance tickets to any recreational activity and guided tours arranged as part of the package
- ULI staff support

SPOUSE RATE (does not include project tours)

Spouses of members participating in the tour are welcome to join with a top-up to cover accommodation, meals, and tickets to any recreational activity arranged as part of the package.

ULI MEMBERSHIP

The 2023 ULI Asia Pacific-Los Angeles Study Tour is open to ULI members only. If you are not a member, please [join ULI](#) in order to register.

BOOKINGS

To secure your place on the 2023 ULI Asia Pacific-Los Angeles Study Tour, please email your completed registration form to asiapacific@uli.org. Registration will close on **22 September or when it reaches capacity** (whichever is earlier).

PAYMENT

Upon confirmation of your registration, full payment in the prescribed amount is required no later than **29 September**. ULI reserves the right to deny participation in the event payment is not received in time.

VISA/TRAVEL

All members joining the tour will be required to organise their own international flights to and from Los Angeles to join the Study Tour. Please obtain your own visa for the United States – Visit for more information:

<https://travel.state.gov/content/travel/en/us-visas.html> (visa)

<https://esta.cbp.dhs.gov/> (ESTA)

CUSTOMER SERVICE

For assistance, please contact ULI Asia Pacific at asiapacific@uli.org or +852 2886 1620.

2023 ULI Asia Pacific-Los Angeles Study Tour

In conjunction with the **ULI Fall Meeting**

27 October – 2 November 2023

REGISTRATION FORM

Yes! Book me for the 2023 ULI Asia Pacific-Los Angeles Study Tour (indicate number of tickets below).

| Tour plus ULI Fall Meeting Ticket ULI Members only | Tour only Applicable only to members already registered for ULI Fall Meeting 2023 |
|--------------------------------------------------------------|---------------------------------------------------------------------------------------------|
| Private sector: USD10,800 ____ tickets | Private sector/ Government/ Non-profit/ Under 35: USD 8,600 ____ tickets |
| Government/Non-profit: USD9,500 ____ tickets | |
| Under 35: USD9,500 ____ tickets | |

PAYMENT INFORMATION

Section 1: Personal details – all fields are required (or attach a business card). Please send each form separately for multiple participants.

Mr/Ms: _____ First name: _____ Last name: _____
 Job title: _____
 Organisation: _____
 Address: _____
 Country: _____ Postal code (if applicable): _____
 Contact number: _____ Email: _____

Section 2: Payment options (credit card, bank transfer or cheque) – tick where applicable

☐ Option 1: **Credit Card** (payments will be charged in USD – exchange rates will be based on your local banking institution)

☐ VISA ☐ Mastercard ☐ American Express

Cardholder's Name : _____

Card number: _____ Expiry date: ____ / ____

☐ Option 2: **Bank transfer** (all currencies)

Account Name: ULI-the Urban Land Institute

Beneficiary Bank: Bank of America N.A. Hong Kong

Bank Address: 20/F, T2 Kowloon Commerce Centre, 51 Kwai Cheong Road, Kwai Chung, Hong Kong

Account No.: 81869014 (overseas wire); 055-757-81869014 (local wire)

SWIFT: BOFAHKHX

Reference: "2023 ULI Asia Pacific-Los Angeles Study Tour"

☐ Option 3: **Cheque** (USD only)

Cheque made payable to **ULI-the Urban Land Institute** and mailed to Room 3418, Jardine House, 1 Connaught Place, Central, Hong Kong.

Full payment is required no later than 29 September 2023.

Section 3: ULI Fall Meeting real estate tour selection

Please indicate which tour you wish to attend. Note that spaces are limited on a first-come, first-served basis.

- ☐ [Transforming South L.A.](#)
- ☐ [Revisiting and Reimagining Historic DTLA](#)
- ☐ [The Revitalization of Broadway Row in Los Angeles](#)
- ☐ [SoFi Stadium and Hollywood Park](#)
- ☐ [Exploring Hollywood's Hidden Gem](#)
- ☐ [Exposition Park: A 160 Acre Urban Oasis in South L.A.](#)
- ☐ [Destination Crenshaw](#)
- ☐ [Exploring the Cultural Heart of L.A. with Grand Avenue](#)
- ☐ [TODs, Mixed Use & Innovation in Culver City](#)
- ☐ [Unearthing the Cultural Treasures of L.A.'s Museum Row](#)
- ☐ [Long Beach: A Gateway to the World and Beyond](#)
- ☐ [Creating Affordable Housing in Marina Del Rey](#)

Section 4: Dietary restrictions

Please list any dietary restrictions, and we will try our best to accommodate. State 'Y' if applicable:

- ☐ Vegetarian
- ☐ Vegan

Allergies (please state): _____

